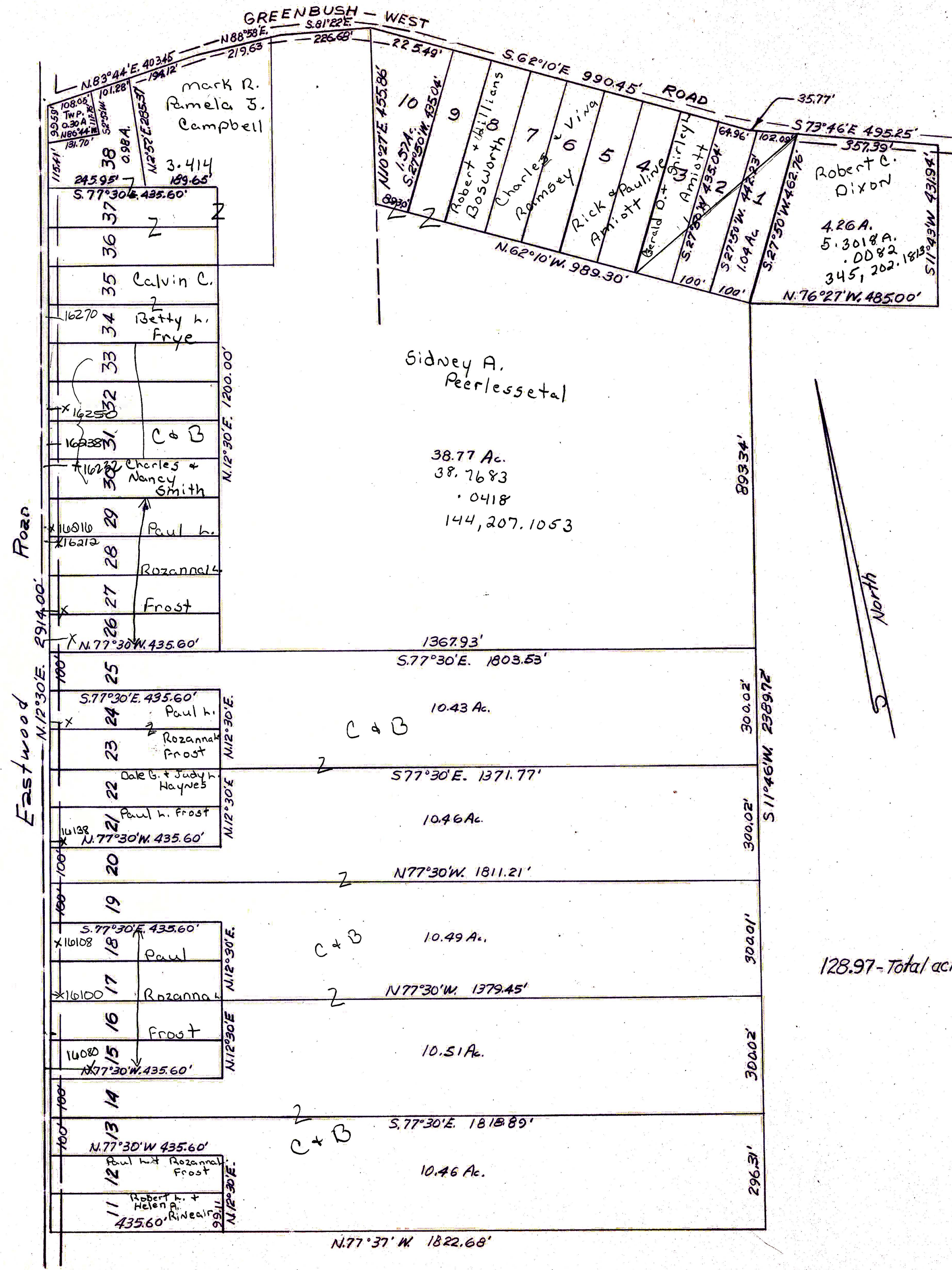


NOTE:  
 LOTS NOS. 11 Through 37 Are:  
 100' X 335.60 - EXPT. - 13, 14  
 19, 20, 25 AS SHOWN AND  
 CONTAIN 1 Acre Each



NOTE:  
 LOTS 2 Through 9 Are 100' X 435.04'  
 AND CONTAIN 1 Acre

128.97 - Total acres

LILLICK FARM SUBDIVISION  
 STERLING TWP. BROWN CO., O.  
 Scale 1" = 200'

C3/199